



# CorePro LEDtube InstantFit HF T5



## CorePro LEDtube HF 1500mm HE 20.5W 865T5

LED, T5, HF, 1500 mm, 20.5 W, 35W TL5 HE, 6500 K, 3000 lm, CRI 80, 50000 hour(s)

CorePro LEDtube InstantFit HF T5 is the quick and easy way to replace T5 fluorescent tubes with a fast payback time. Designed with industry leading ballast compatibility, the product is ideal for your everyday lighting jobs. With simply plug-and-play installation, it improves energy efficiency immediately and lasts for longer than conventional T5.

### Product data

General Information	
Cap-Base	G5
Nominal lifetime	50,000 hour(s)
Switching Cycle	50,000
Lighting Technology	LED
Flux measurement reference	Sphere
Warranty period	3 years
Light Technical	
Color Code	865 [CCT of 6500K]
Beam Angle (Nom)	200 degree(s)
Luminous Flux	3,000 lm
Color Designation	Cool Daylight
Correlated Color Temperature (Nom)	6500 K
Luminous Efficacy (rated) (Nom)	146 lm/W
Color Consistency	<6

Color rendering index (CRI)	80
LLMF At End Of Nominal Lifetime (Nom)	70 %
Photobiological safety according to EN 62471	RG0
Operating and Electrical	
Input Frequency	30K to 100K Hz
Power Consumption	20.5 W
Lamp Current (Max)	350 mA
Lamp Current (Min)	150 mA
Starting Time (Nom)	0.5 s
Warm-up time to 60% light	0.5 s
Power Factor (Fraction)	0.9
Voltage (Nom)	80-130 V
LED alternative to fluorescent lamp power	35W TL5 HE
Inrush current at mains	-
Max. lamp no. on MCB B type 10A - Mains	-

CorePro LEDtube InstantFit HF T5

Max. lamp no. on MCB B type 10A – EM ballast without Compensation Capacitor.	-
Max. lamp no. on MCB B type 10A – EM ballast with Compensation Capacitor.	-
Max. lamp no. on MCB B type 16A – Mains	-
Max. lamp no. on MCB B type 16A – EM ballast without Compensation Capacitor.	-
Max. lamp no. on MCB B type 16A – EM ballast with Compensation Capacitor.	-
Ballast Compatibility	HF

Temperature

T-Case Maximum (Nom)	45 °C
----------------------	-------

Controls and Dimming

Dimmable	No
----------	----

Mechanical and Housing

Bulb Finish	Frosted
Bulb Material	Glass
Product Length	1,500 mm
Bulb Shape	T5
Net Weight (Piece)	0.196 kg

Approval and Application

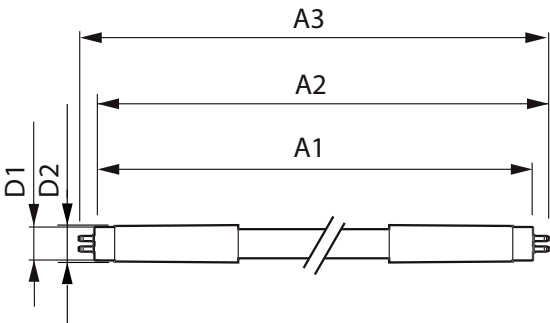
Energy Efficiency Class	D
-------------------------	---

Energy Saving Product	Yes
Approval Marks	RoHS compliance KEMA Keur certificate
Energy Consumption kWh/1000 h	21 kWh
EPREL Registration Number	1880105
CE mark	Yes
EU RoHS compliant	Yes
Ambient temperature range	-20 to +45 °C

Product Data

Order product name	CorePro LEDtube HF 1500mm HE 20.5W 865T5
Full product name	CorePro LEDtube HF 1500mm HE 20.5W 865T5
Full product code	872016929556800
Order code	929003774902
Material Nr. (12NC)	929003774902
Numerator - Quantity Per Pack	1
EAN/UPC - Product/Case	8720169295568
Numerator - Packs per outer box	10
EAN/UPC - Case	8720169295575

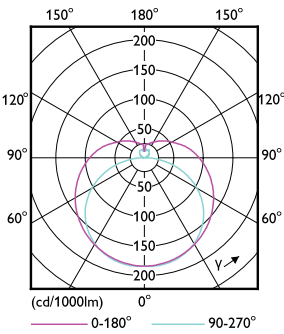
Dimensional drawing



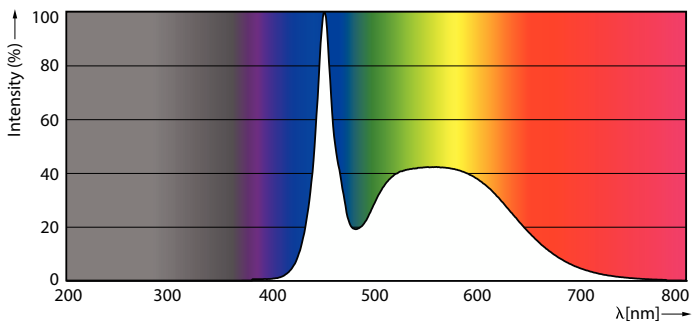
Product	D1	D2	A1	A2	A3
CorePro LEDtube HF 1500mm HE 20.5W 865T5	15.5 mm	16/19 mm	1,449 mm	1,456 mm	1,463 mm

CorePro LEDtube InstantFit HF T5

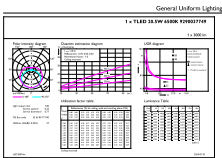
Photometric data



Light Distribution Diagram - CorePro LEDtube HF 1500mm HE 20.5W 865T5

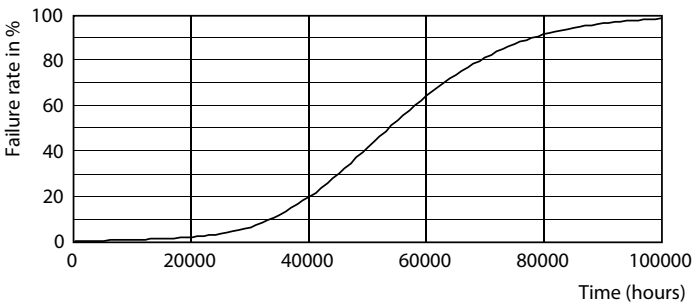


Spectral Power Distribution Colour - CorePro LEDtube HF 1500mm HE 20.5W 865T5

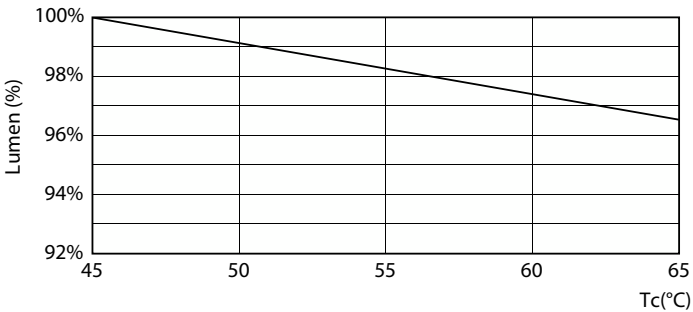


General uniform lighting - CorePro LEDtube HF 1500mm HE 20.5W 865T5

Lifetime



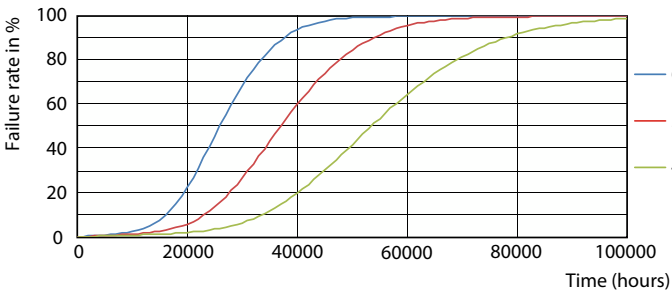
Life Expectancy Diagram



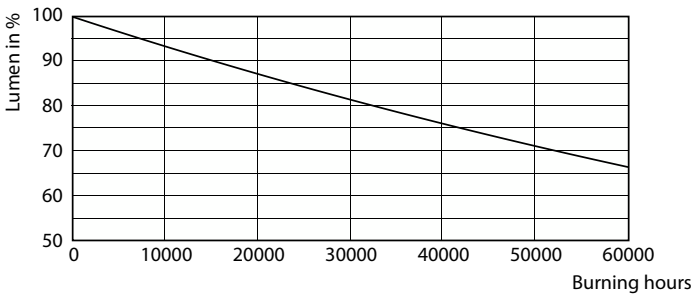
Lumen Maintenance Diagram - CorePro LEDtube HF 1500mm HE 20.5W 865T5

CorePro LEDtube InstantFit HF T5

Lifetime



FailureRate



LifetimeVsTc

Lumen Maintenance Diagram - CorePro LEDtube HF 1500mm HE 20.5W 865T5

